

NEW

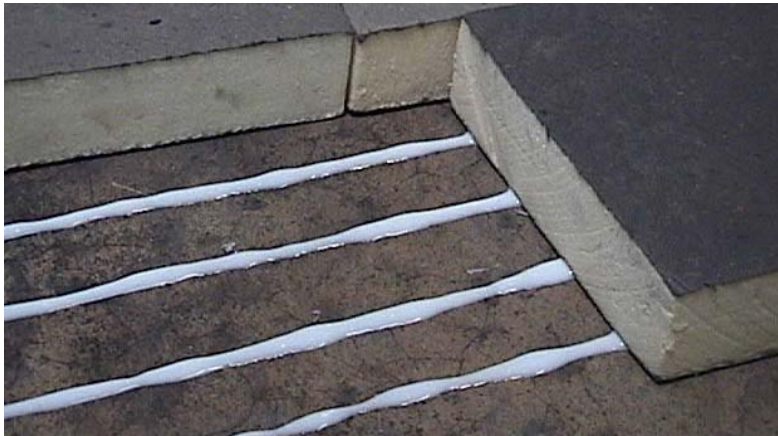
DEKBOND[™]

Two Part Insulation Adhesive

PRODUCT DESCRIPTION: **DEK BOND[™]** is a highly elastomeric, two part, VOC compliant, all-purpose, foamable adhesive that contains no solvents and sets in minutes.

TEST APPROVALS:

Factory Mutual - Dade County



APPROVED SUBSTRATES:

- ❖ Structural decks: Concrete, Gypsum, Tectum, Cementitious Wood Fiber, Wood or Steel
- ❖ Base Sheets (sanded or granule surfaced)
- ❖ Approved insulations (multi-layer applications)
- ❖ Smooth built-up roof surfaces (re-roof applications)

APPROVED INSULATIONS:

- ❖ HD Wood Fiber
- ❖ Fiber Glass
- ❖ Isocyanurate
- ❖ Perlite
- ❖ Polystyrene
- ❖ Gypsum Board

FEATURES AND BENEFITS:

- ❖ Quick "Lock-Down" 5 to 10 minutes
- ❖ Low equipment investment
- ❖ Easy to apply
- ❖ Installation to 0° Fahrenheit
- ❖ No mixing
- ❖ Remains flexible
- ❖ Absorbs stresses
- ❖ Eliminates minor surface irregularities
- ❖ Low odor
- ❖ VOC compliant
- ❖ No flame hazard
- ❖ 100% solids

LIMITATIONS:

- ❖ Do not apply to a wet surface
- ❖ Not recommended for use with insulation boards larger than 4' x 4'
- ❖ Do not use warped or curled insulation boards.
- ❖ All boards must lay flat upon the roof surfaces

SURFACE PREPARATION: All work surfaces should be clean, dry, free of dirt, dust, debris, oils, loose and/or embedded gravel, un-adhered coatings, deteriorated membrane and other contaminants that may result in a surface that is not sound or is un-even. For re-cover applications apply DEK BOND™ Primer to all substrates prior to the application of **DEK BOND**.

APPLICATION: Apply **DEK BOND** directly to the substrate, using a ribbon pattern. Space 1/2" wide beads, 12" o.c., to achieve proper coverage rates for insulation attachment. As adhesive is applied, immediately place insulation board. For base sheet attachment, 1/2" wide beads are spaced, minimum 6" o.c. Do not allow the adhesive to skin over, and eliminate any uneven surfaces to ensure positive contact between the insulation board and substrate. Unused material can be applied at a later date by simply replacing the mixing tip.

EQUIPMENT: **DEK BOND** can be applied manually with a dual component caulk gun or with the multi-port applicator.

COLOR:
Light Amber

PACKAGING:

- ❖ 4-1500 ml cartridges per case.
- ❖ 48 cases per pallet

FREIGHT POLICY:
F.O.B. SFS intec, unless freight-free minimums are met on fasteners & plates.

COVERAGE RATES:
600 square feet per case.
* Coverage rates may differ slightly over irregular surfaces.



APPLICATION TEMPERATURE:
DEK BOND can be applied in all temperatures. When applied in temperatures below 40°F, **DEK BOND** Foam Accelerator may be required.

STORAGE:
For ease of application, maintain a minimum material temperature of 70°F, prior to use. Shelf life is 8 months from date of manufacture.

