

## #12 Hex Head

1/4" hex drive, 13 tpi, drill point  
For insulation attachment to wood and steel roof decks

- Available with 1/4" hex head.
- Drill point design prevents fastener walking.
- 13 threads per inch provides higher pull-out values.

- Drill point cuts through gravel and BUR.
- Standard gray e-coat coating provides compatibility with white, galvanized or gray deck undersides.



## Application

### #12 Dekfast Fasteners

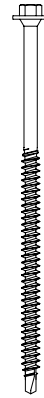
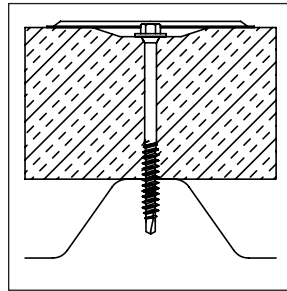
Available pre-assembled and loose for insulation attachment to steel and wood.

Materials:

- Steel thickness from 22 ga (.028 in.) through 18 ga (.045 in.):  
Min penetration: 3/4"
- Wood 2x (1-1/2" thick):  
Min penetration: 1"
- Plywood: Min thickness: 3/4"  
FR treated; min through penetration: 1/4"

Use with:

- Dekfast 2-7/8" hex plates
- Dekfast 3" round plastic Dekflat plates



Head Types: 1/4" Hex Head  
Head Height: Max .118"  
Head Dia: Max .448"  
Thread Major Dia: .222"  
Shank Dia: .167"

**Strength (lbs ult.):**

Tensile: 2410  
Torsional: 76 in-lbs min  
Shear: 1815

**Pull-out (lbs avg.):**

Steel 22 ga: 513  
Steel 20 ga: 695  
Steel 18 ga: 787  
2x dimensional lumber (1" penetration): 462  
3/4" FR plywood (through penetration): 575

## Notes

Dimensions are nominal inches unless noted. Ultimate values listed are the result of laboratory testing. Pull-out (pounds ultimate) strength values may vary from tabulated loads depending upon the uniqueness of the application. The specific job conditions should be considered and appropriate safety factors applied when specifying the proper fasteners.

## Selection

Length	Part No. Hex Head	Steel	Wood	Concrete	Carton Wt. (lbs)	Carton Qty.	Skid Qty.
1-5/8"	C7400-995B	Up to 7/8"	Up to 5/8"	N/A	14	1,000	48,000
2-1/4"	C7410-995B	5/8" to 1-1/2"	Up to 1-1/4"	N/A	18	1,000	48,000
2-7/8"	C7420-995B	5/8" to 2-1/8"	Up to 1-1/8"	N/A	23	1,000	48,000
3-1/4"	C7430-995B	1/2" to 2-1/2"	1/2" to 2-1/4"	N/A	26	1,000	48,000
3-3/4"	C7440-995B	1" to 3"	1" to 2-3/4"	N/A	29	1,000	48,000
4-1/2"	C7450-995B	3/4" to 3-3/4"	3/4" to 3-1/2"	N/A	34	1,000	48,000
5"	C7460-995B	1-1/4" to 4-1/2"	1-1/4" to 4"	N/A	37	1,000	32,000
6"	C7470-995B	2-1/4" to 5-1/4"	2-1/4" to 5"	N/A	44	1,000	32,000
7"	C7480-995B	3-1/4" to 6-1/4"	3-1/4" to 6"	N/A	25	500	24,000
8"	C7490-995B	4-1/4" to 7-1/4"	4-1/4" to 7"	N/A	28	500	24,000

## Approvals

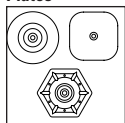
Dekfast fasteners and plates are Factory Mutual approved for attachment of insulation board to roof deck. Refer to FM Approval Guide and Supplements for current FM approved insulation fastening patterns. #12 hex head fasteners exceed Factory Mutual corrosion-resistance Standard 4470.

## Installation

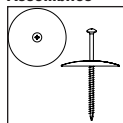
Tools: 2000 – 2500 rpm screw guns with 1/4" hex head drive bits. #12 hex head Dekfast fasteners are available pre-assembled with metal insulation plates.

## Options

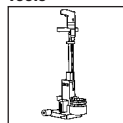
### Insulation Plates



### Assemblies



### Installation Tools



### Coatings

