

#12 Phillips Head

#3 Phillips drive, 13 tpi, drill point
For insulation attachment to wood and steel roof decks

- Available with #3 Phillips drive.
- Drill point design prevents fastener walking.
- 13 threads per inch provides higher pull-out values.

- Drill point cuts through gravel and BUR.
- Standard gray e-coat coating provides compatibility with white, galvanized or gray deck undersides.



Application

#12 Dekfast Fasteners

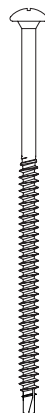
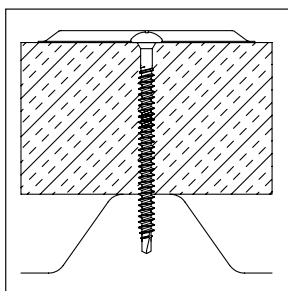
Available pre-assembled and loose for insulation attachment to steel and wood.

Materials:

- Steel thickness from 22 ga (.028 in.) through 18 ga (.045 in.):
Min penetration: 3/4"
- Wood 2x (1-1/2" thick):
Min penetration: 1"
- Plywood: Min thickness: 3/4"
FR treated; min through penetration: 1/4"

Use with:

- Dekfast 3" round metal plates and 2-7/8" hex metal plates
- Dekfast 3" round plastic Dekflat plates



Head Types: #3 Phillips
Head Height: Max .118"
Head Dia: Max .448"
Thread Major Dia: .222"
Shank Dia: .167"

Strength (lbs ult.):

Tensile: 2410
Torsional: 76 in-lbs min
Shear: 1815

Pull-out (lbs avg.):

Steel 22 ga: 513
Steel 20 ga: 695
Steel 18 ga: 787
2x dimensional lumber (1" penetration): 462
3/4" FR Plywood (through penetration): 575

Notes

Dimensions are nominal inches unless noted. Ultimate values listed are the result of laboratory testing. Pull-out (pounds ultimate) strength values may vary from tabulated loads depending upon the uniqueness of the application. The specific job conditions should be considered and appropriate safety factors applied when specifying the proper fasteners.

Selection

Length	Part No.		Steel	Wood	Concrete	Carton Wt. (lbs)	Carton Qty.	Skid Qty.
	Phillips Head							
1-5/8"	A8513-995B		Up to 7/8"	Up to 5/8"	N/A	13	1,000	48,000
2-1/4"	A8518-995B		5/8" to 1-1/2"	Up to 1-1/4"	N/A	17	1,000	48,000
2-7/8"	A8523-995B		5/8" to 2-1/8"	Up to 1-1/8"	N/A	21	1,000	48,000
3-1/4"	A8526-995B		1/2" to 2-1/2"	1/2" to 2-1/4"	N/A	23	1,000	48,000
3-3/4"	A8530-995B		1" to 3"	1" to 2-3/4"	N/A	26	1,000	48,000
4-1/2"	A8536-995B		3/4" to 3-3/4"	3/4" to 3-1/2"	N/A	31	1,000	32,000
5"	A8540-995B		1-1/4" to 4-1/2"	1-1/4" to 4"	N/A	34	1,000	32,000
6"	A8548-995B		2-1/4" to 5-1/4"	2-1/4" to 5"	N/A	41	1,000	32,000
7"	A8556-995B		3-1/4" to 6-1/4"	3-1/4" to 6"	N/A	24	500	24,000
8"	A8564-995B		4-1/4" to 7-1/4"	4-1/4" to 7"	N/A	28	500	24,000

Approvals

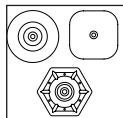
Dekfast fasteners and plates are Factory Mutual approved for attachment of insulation board to roof deck. Refer to FM Approval Guide and Supplements for current FM approved insulation fastening patterns. #12 fasteners exceed Factory Mutual corrosion-resistance Standard 4470.

Installation

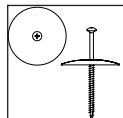
Tools: 2000 – 2500 rpm screw guns with hardened #3 Phillips. #12 Dekfast fasteners can be pre-assembled with metal or plastic insulation plates.

Options

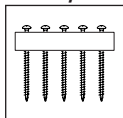
Insulation Plates



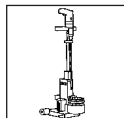
Assemblies



Belted Systems



Installation Tools



Coatings

